

PORTABLE FORCED AIR HEATER

Illustrated Parts List

PFA-34

Issued: Nov. 1988

MASTER B100B

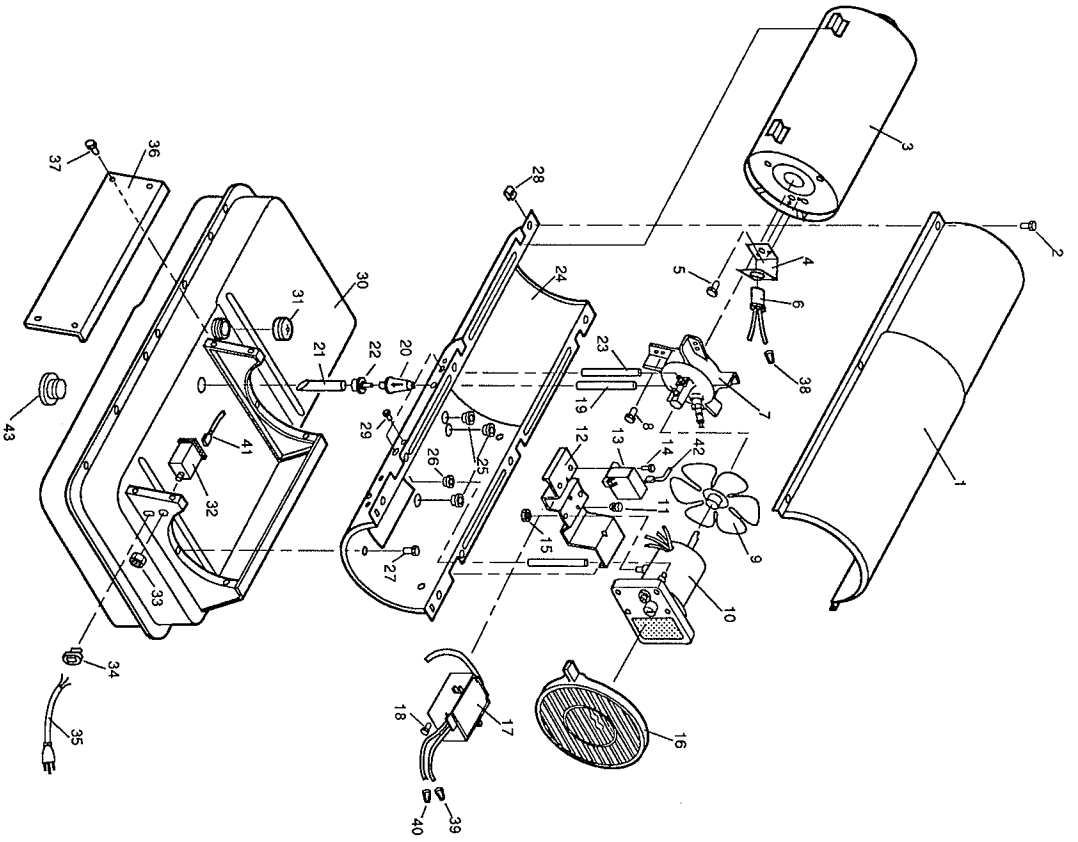
IMPORTANT: Do not use key numbers when ordering service parts. Always order components by part number and description. Include model and serial numbers.

KEY NO.	PART NUMBER	DESCRIPTION	QTY.	KEY NO.	PART NUMBER	DESCRIPTION	QTY.
1	098511-61	Upper Shell	1	20	M51150-01	Fuel Filter	1
2	M15823-27	Hex Head Screw, #10-16 x 1/2	8	21	M51151-01	Fuel Line Tube	1
3	098512-07	Combustion Chamber	1	22	M10990-3	Rubber Bushing	1
4	M16660	Photocell Bracket	1	23	M50814-06	Airline	1
5	M10908-2	Hex Head Screw, #6-32 x 3/8	2	24	098511-61	Lower Shell	1
6	M16656-4	Photocell Assembly	1	25	M30865-02	Bushing	3
7	***	Burner Head Assembly	1	26	M50104-02	Bushing	1
7-1	M51120-01	Nozzle	1	27	M11084-27	Hex Head Screw, #10-16 x 1/2	6
7-2	M10659-1	Washer, Nozzle	2	28	M11271-8	Clip Nut	8
7-3	M10809-1	Spring, Nozzle	1	29	M15823-37	Hex Head Screw, #8-18 x 1/4	1
7-4	M8882	Sleeve, Nozzle	1	30	098513-21	Fuel Tank	1
7-5	M50924-03	Body, Burner Head	1	31	097702-01	Fuel Cap (includes gasket)	1
7-6	M50820-02	Fitting, Barb	2	32	M50671-01	Safety Control	1
7-7	M10962-2	Spark Plug	1	33	M51157-01	Hex Nut, 12mm	1
8	M11084-27	Hex Head Screw, #10-16 x 1/2	3	34	M11143-1	Strain Relief Bushing	1
9	M51153-01	Fan	1	35	098219-07	Power Cord	1
10	***	Motor and Pump Assembly	1	36	M51077-01AA	Side Cover	1
10-1	097300-01	Motor (Split Phase)	1	37	M11084-27	Hex Head Screw, #10-16 x 1/2	4
10-2	079975-01	Pump Body	1	38	**	Wire Connector (blue wires)	1
10-3	FHPF3-2C	Screw, #10-32 x 1/2	2	39	**	Wire Connector (red wires)	1
10-4	M22009	Insert, Rotor	1	40	**	Wire Connector (white wires)	1
10-5	M22456-1	Rotor, Pump	1	41	**	Assembly Wire, Red 6"	1
10-6	M50545	Cover, Pump End	1	42	**	Assembly Wire, Red 14.5"	1
10-7	M12179	Intake Filter	1	43	M27417	Drain Plug (includes "O" ring)	1
10-8	M16545	Cover, End Filter	1				
10-9	M8940	Steel Ball 1/4 dia.	1				
10-10	M10993-1	Spring, Relief	1				
10-11	M27694	Adjusting Screw	1				
10-12	M22997	Plug	1				
10-13	M12461-31	Hex Head Screw, #10-32 x 1	10				
10-14	M12244-1	Output Filter	1				
10-15	M11637	Lint Filter	1				
10-16	M50820-02	Fitting, Barb	1				
10-17	M8643	Blade	4				
11	M50631	Rubber Bumper	2				
12	098138-02	Motor Mounting Bracket	1				
13	097061-01	Solid State Relay	1				
14	M15823-39	Hex Head Screw, #8-18 x 1/2	2				
15	NTC-4C	Hex Lock Nut	2				
16	M51114-01	Fan Guard	1				
17	098557-01	Ignitor Kit (includes leads)	1				
18	M11084-29	Hex Head Screw, #10-16 x 3/4	2				
19	M51345-01	Fuel Line	1				
PARTS AVAILABLE - NOT SHOWN							
					097644-01	Tradename Decal	
					079023-01	Wheels	2
					M51015-01	Axle	1
					M12342-3	Frame Support Wheel	1
					HA2203	Handle	2
					M12345-33	Screw, #10-24 x 1 3/4	8
					M28526	Nut Cap	2
					NTC-3C	Hex Lock Nut, #10-24	8
OPTIONAL ACCESSORIES							
					HA1200	Hang-up Thermostat	
					HA1180	Air Gauge Kit	

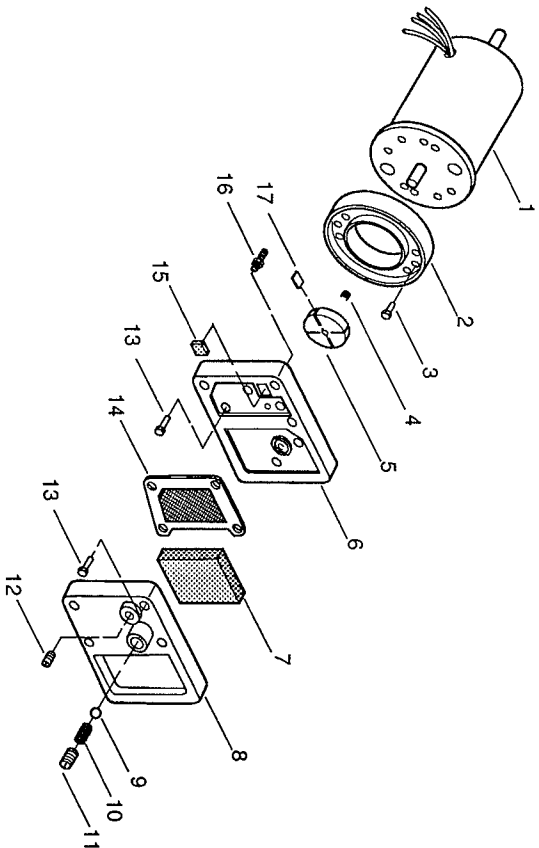
**Available at your local hardware store.

***Not available as an assembly.

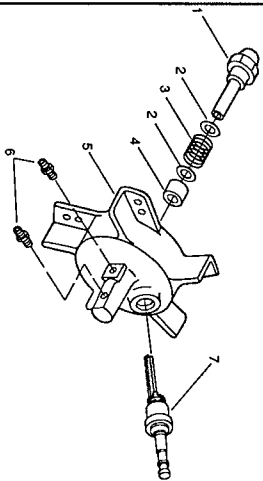
HEATER EXPLODED VIEW



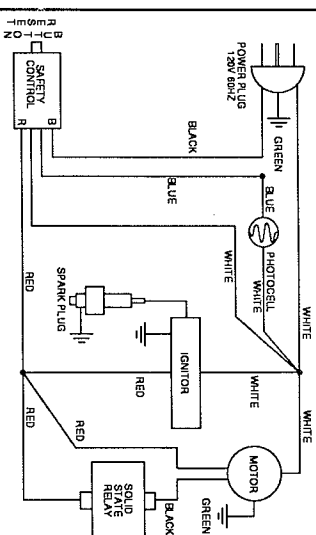
MOTOR PACKAGE ASSEMBLY



BURNER HEAD ASSEMBLY



WIRING DIAGRAM



SPECIFICATIONS

Output Rating (BTU Per Hour) 100,000
 Fuel Kerosene or #1 fuel oil
 Fuel Tank Capacity (U. S. Gallons) 9
 Fuel Consumption (Approximate U.S. Gallons Per Hour) 0.74
 Electric Requirements 120V/60Hz
 Amperage (Normal Run) 5

Motor RPM 3450
 Hot Air Output (Approximate CFM) 481
 Air Pump Pressure (PSI) 4.0
 Shipping Weight (Approximate Pounds) 64
 Heater Weight Without Fuel (Approximate Pounds) 55
 Duct No Duct Recommended