

## PORTABLE FORCED AIR HEATER

### Illustrated Parts List

# PFA-35

Issued: Nov. 1988

## MASTER B150C

**IMPORTANT:** Do not use key numbers when ordering service parts. Always order components by part number and description. Include model and serial numbers.

KEY NO.	PART NUMBER	DESCRIPTION	QTY.	KEY NO.	PART NUMBER	DESCRIPTION	QTY.
1	098511-58	Upper Shell	1	22	M11084-27	Hex Head Screw, #10-16 x 1/2	6
2	098068-01	Heat Deflector Kit	1	23	M11271-8	Nut, Clip	7
3	098512-02	Combustion Chamber	1	24	M12828	Bracket, Shell Support	1
4	M11084-29	Hex Head Screw, #10-16 x 3/4	2	25	M11084-27	Hex Head Screw, #10-16 x 1/2	8
5	M11084-29	Hex Head Screw, #10-16 x 3/4	2	26	M11084-29	Hex Head Screw, #10-16 x 3/4	2
6	M16656-4	Photocell Assembly	1	27	M50104-03	Bushing	2
7	M16660	Photocell Bracket	1	28	M50671-01	Safety Control	1
8	M10908-2	Hex Head Screw, #6-32 x 3/8	2	29	097061-01	Solid State Relay	1
9	***	Burner Head Assembly	1	30	M15823-39	Hex Head Screw, #8-18 x 1/2	2
9-1	M16790-12	Fuel Line	1	31	097060-01	Solid State Relay Bracket	1
9-2	M19630	Filter, Screen Fuel	1	32	M11084-27	Hex Head Screw, #10-16 x 1/2	1
9-3	M50660-05	Nut, Flare	1	33	M16645	Motor Support Bracket	1
9-4	079685-01	Connector, Male	1	34	M30865-04	Bushing	1
9-5	M50820-02	Fitting, Barb	1	35	098557-01	Ignitor Kit (includes leads)	1
9-6	M8882	Seal, Nozzle	1	36	M11084-29	Hex Head Screw, #10-16 x 3/4	2
9-7	M10659-1	Washer, Nozzle	2	37	M11143-1	Strain Relief Bushing	1
9-8	M10809-1	Spring, Nozzle	1	38	098219-07	Power Cord	1
9-9	M18022	Nozzle, 1.1 GPH	1	39	098513-08	Fuel Tank	1
9-10	M10962-2	Spark Plug	1	40	097702-01	Fuel Cap (includes gasket)	1
9-11	M50924-01	Body, Burner Head	1	41	M10990-3	Rubber Bushing	1
10	M11084-27	Hex Head Screw, #10-16 x 1/2	3	42	M11084-27	Hex Head Screw, #10-16 x 1/2	2
11	M50814-03	Airline Tubing	1	43	M11084-27	Hex Head Screw, #10-16 x 1/2	2
12	M50873-01	Airline Clip	9	44	M27417	Drain Plug	1
13	**	Wire Assembly (red, 6")	2	45	**	Wire Connector (blue wires)	1
14	M11084-27	Hex Head Screw, #10-16 x 1/2	1	46	**	Wire Connector (red wires)	1
15	M17058	Fan	1	47	**	Wire Connector (white wires)	1
16	***	Motor and Pump Assembly	1				
16-1	M16545	Cover, End Filter	1				
16-2	M12461-31	Hex Head Screw, #10-32 x 1	10				
16-3	M12179	Intake Filter	1				
16-4	M12244-1	Output Filter	1				
16-5	M11637	Lint Filter	1				
16-6	M50545	Cover, End Pump	1				
16-7	M8643	Blade	4				
16-8	M22456-1	Rotor Pump	1				
16-9	M22009	Insert, Rotor	1				
16-10	079975-01	Pump Body	1				
16-11	FHPF3-2C	Screw, #10-32 x 1/4	2				
16-12	M50820-02	Fitting, Barb	1				
16-13	M22997	Plug	1				
16-14	M27694	Adjusting Screw	1				
16-15	M10993-1	Relief Spring	1				
16-16	M8940	Ball, 1/4 diameter	1				
16-17	097307-01	Motor	1				
17	M16661	Motor Clamp	4				
18	M51043-01	Hex Hd. Screw, #1/4-20 x 1 1/2	2				
19	WLM-4C	Lockwasher 1/4 inch	2				
20	NPC-4C	Nut, Hex 1/4-20	2				
21	098511-08	Lower Shell	1				
<b>PARTS AVAILABLE - NOT SHOWN</b>							
					097643-01	Tradename Decal	
					079023-01	Wheels	2
					M16801-2	Axle	1
					M12831-3	Frame Support Wheel	1
					HA2204	Handle	2
					M12345-33	Mounting Screws, #10-24 x 1 3/4	8
					M28526	Nut Cap	2
					NTC-3C	Hex Lock Nut, #10-24	8
<b>OPTIONAL ACCESSORIES</b>							
					HA1200	Hang-up Thermostat	
					HA1180	Air Gauge Kit	

\*\* Available at your local hardware store.

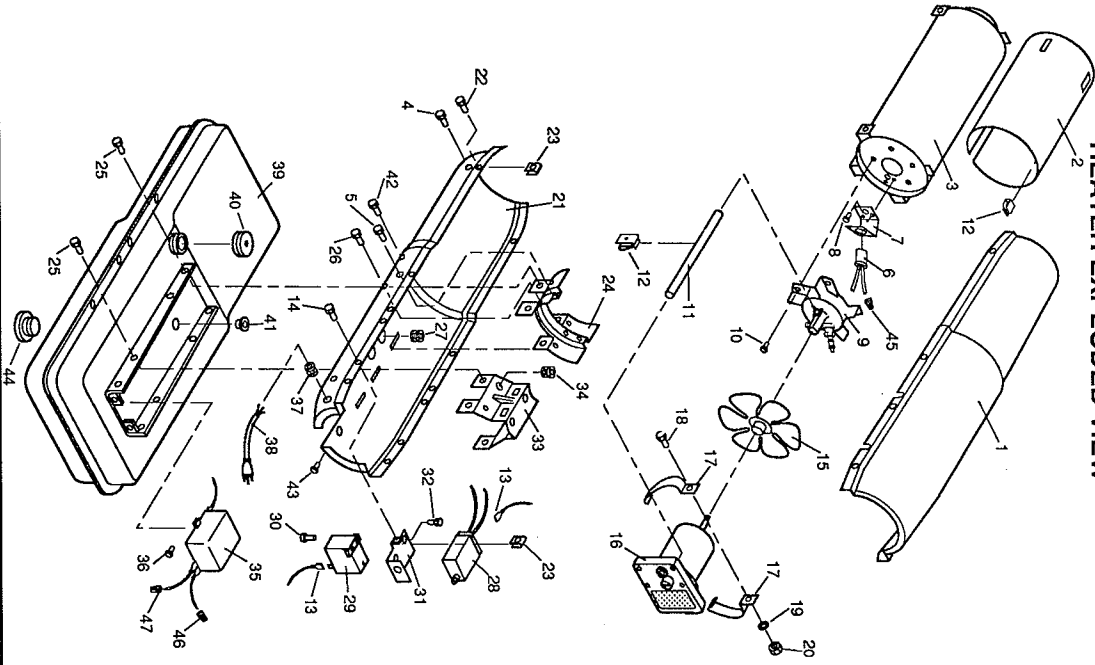
\*\*\* Not available as an assembly.

098682-01

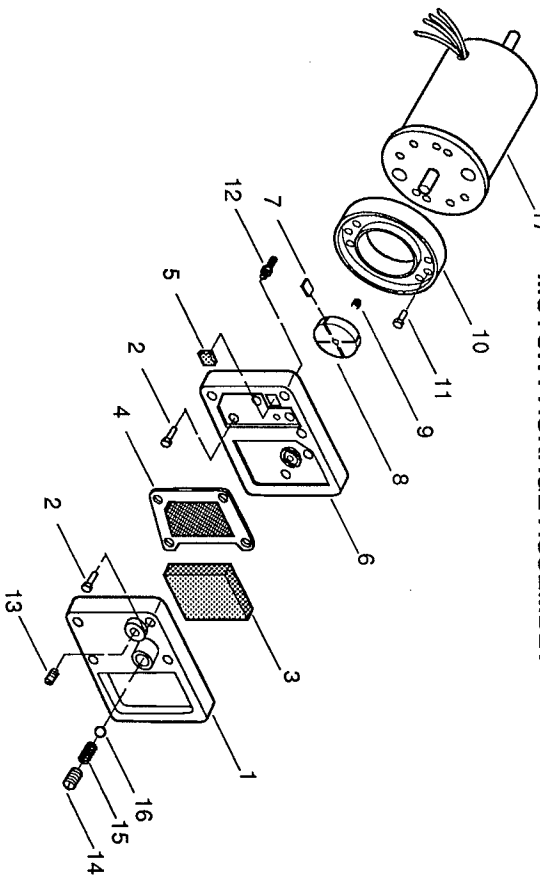
REV. A

8A

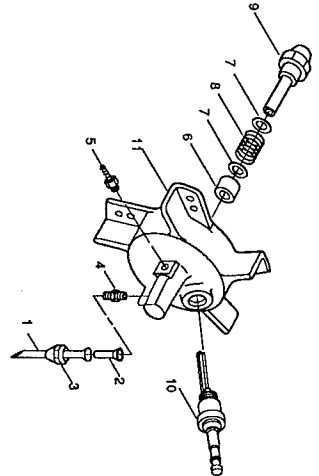
### HEATER EXPLODED VIEW



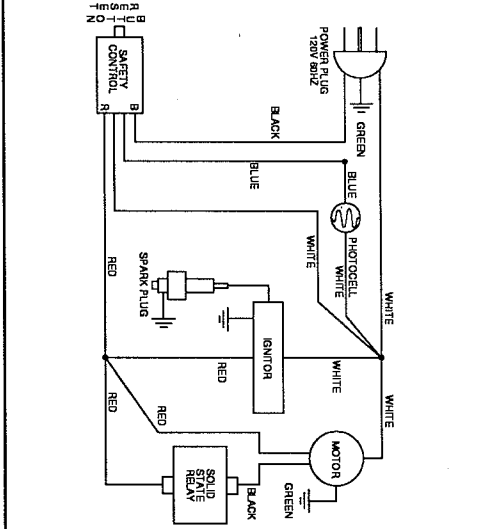
### MOTOR PACKAGE ASSEMBLY



### BURNER HEAD ASSEMBLY



### WIRING DIAGRAM



### SPECIFICATIONS

Output Rating (BTU Per Hour) **150,000**  
 Fuel **Kerosene or #1 fuel oil**  
 Fuel Tank Capacity (U. S. Gallons) **13.5**  
 Fuel Consumption (Approximate U.S. Gallons Per Hour) **1.1**  
 Electric Requirements **120V/60Hz**  
 Amperage (Normal Run) **4.5**

Motor RPM **3450**  
 Hot Air Output (Approximate CFM) **648**  
 Air Pump Pressure (PSI) **5.0**  
 Shipping Weight (Approximate Pounds) **94**  
 Heater Weight Without Fuel (Approximate Pounds) **77**  
**No Duct Recommended**