

**PORTABLE FORCED AIR HEATER**  
*Illustrated Parts List*

**MASTER  
B50E**

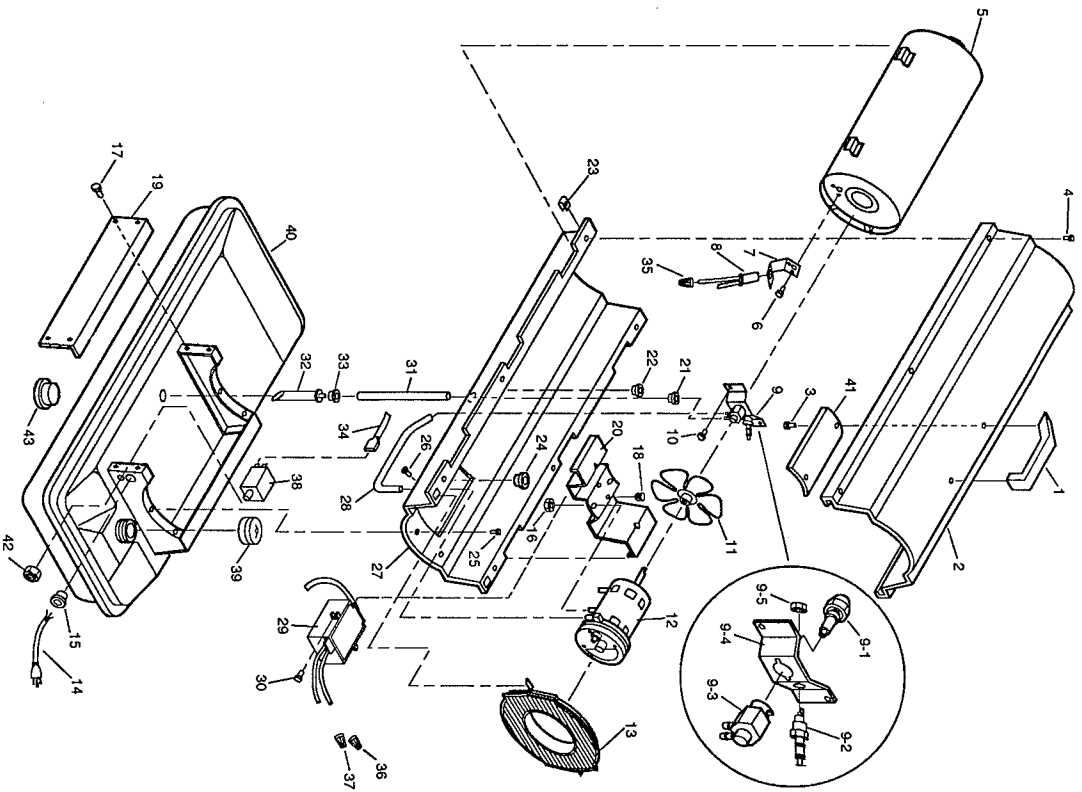
**IMPORTANT:** Do not use key numbers when ordering service parts. Always order components by part number and description. Include model and serial numbers.

KEY NO.	PART NUMBER	DESCRIPTION	QTY.	KEY NO.	PART NUMBER	DESCRIPTION	QTY.
1	M51104-01	Handle	1	23	M11271-8	Clip Nut	6
2	098511-54	Upper Shell	1	24	M50104-02	Bushing (wires)	1
3	M11084-29	Hex Head Screw, #10-16 x 3/4	2	25	M11084-26	Hex Head Screw, #10-16 x 3/8	6
4	M15823-27	Hex Head Screw, #10-16 x 1/2	6	26	M15823-37	Hex Head Screw #8-18 x 1/4	1
5	098512-13	Combustion Chamber	1	27	098511-12	Lower Shell	1
6	M10908-2	Hex Head Screw, #6-32 x 3/8	2	28	M29652-01	Rubber Airline	1
7	M16660	Photocell Bracket	1	29	098557-01	Ignitor Kit (includes leads)	1
8	M16656-4	Photocell Assembly	1	30	M11084-29	Hex Head Screw, #10-16 x 3/4	2
9	***	Burner Head Assembly	1	31	079973-01	Fuel Line	1
9-1	M50597	Nozzle	1	32	M50876-02	Fuel Filter Assembly	1
9-2	M29835-2	Spark Plug	1	33	M10990-3	Bushing, Rubber	1
9-3	079980-01	Nozzle Adapter	1	34	**	Wire Assembly (red, 6")	1
9-4	097125-01	Bracket	1	35	**	Wire Connector (Blue Wires)	1
9-5	M29824	Nut, 14mm	1	36	**	Wire Connector (Red Wires)	1
10	M11084-26	Hex Head Screw, #10-16 x 3/8	2	37	**	Wire Connector (White Wires)	1
11	M30884	Fan	1	38	M50671-01	Safety Control	1
12	***	Motor and Pump Assembly	1	39	097702-01	Fuel Cap (includes gasket)	1
12-1	097073-01	Motor	1	40	098513-27	Fuel Tank	1
12-2	079975-01	Pump Body	1	41	M51108-01	Heat-Shell shield	1
12-3	M22009	Insert	1	42	M51157-01	Hex Nut, 12mm	1
12-4	M22456-1	Rotor	1	43	M27417	Drain Plug (includes "O" ring)	1
12-5	M29608	End Pump Cover	1	<b>PARTS AVAILABLE - NOT SHOWN</b>			
12-6	M29632	Lint Filter	1		097646-01	Tradename Decal	
12-7	M29633	Intake Filter	1	<b>OPTIONAL ACCESSORIES</b>			
12-8	M29609	End Cover Filter	1		HA1200	Hang-up Thermostat	
12-9	M12461-31	Hex Head Screw, #10-32 x 1	3		HA1202	Heavy Duty Wheels and Handle Kit	
12-10	M27694	Adjusting Screw	1		HA1206	Standard Wheels and Handle Kit	
12-11	M10993-1	Pressure Relief Spring	1		HA1180	Air Gauge Kit	
12-12	M22997	Plug	1				
12-13	M8940	Steel Ball 1/4" dia.	1				
12-14	M29612-01	Output Filter	1				
12-15	M12461-31	Hex Head Screw, #10-32 x 1	6				
12-16	M50016	Elbow 90°	1				
12-17	M8643	Blade	4				
12-18	FHPF3-2C	Hex Head Screw, #10-32 x 1/4	2				
13	M51105-01	Fan Guard	1				
14	098219-06	Power Cord	1				
15	M11143-1	Strain Relief Bushing	1				
16	NTC-4C	Hex Lock Nut	2				
17	M11084-26	Hex Head Screw, #10-16 x 3/8	2				
18	M50631	Rubber Bumper	2				
19	M50899-03AA	Side Cover	1				
20	098138-01	Motor Bracket	1				
21	M30865-02	Bushing	1				
22	M25907	Bushing	1				

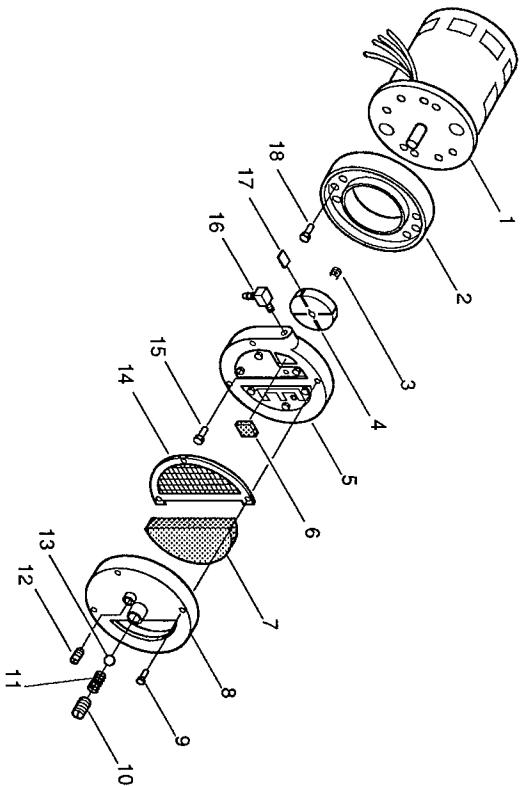
\*\*Available at your local hardware store.

\*\*\*Not available as an assembly.

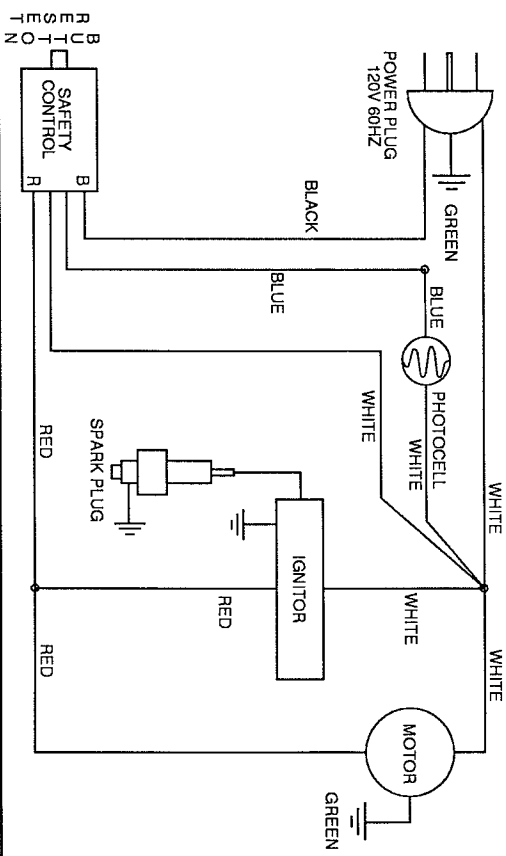
### HEATER EXPLODED VIEW



### MOTOR PACKAGE ASSEMBLY



### WIRING DIAGRAM



### SPECIFICATIONS

Output Rating (BTU Per Hour) 50,000  
 Fuel Kerosene or #1 fuel oil  
 Fuel Tank Capacity (U. S. Gallons) 4  
 Fuel Consumption (Approximate U.S. Gallons Per Hour) 0.37  
 Electric Requirements 120V/60Hz  
 Amperage (Normal Run) 2.5

Motor RPM 1725  
 Hot Air Output (Approximate CFM) 166  
 Air Pump Pressure (PSI) 3.6  
 Shipping Weight (Approximate Pounds) 43  
 Heater Weight Without Fuel (Approximate Pounds) 36  
 Duct No Duct Recommended