

B99 + B99D

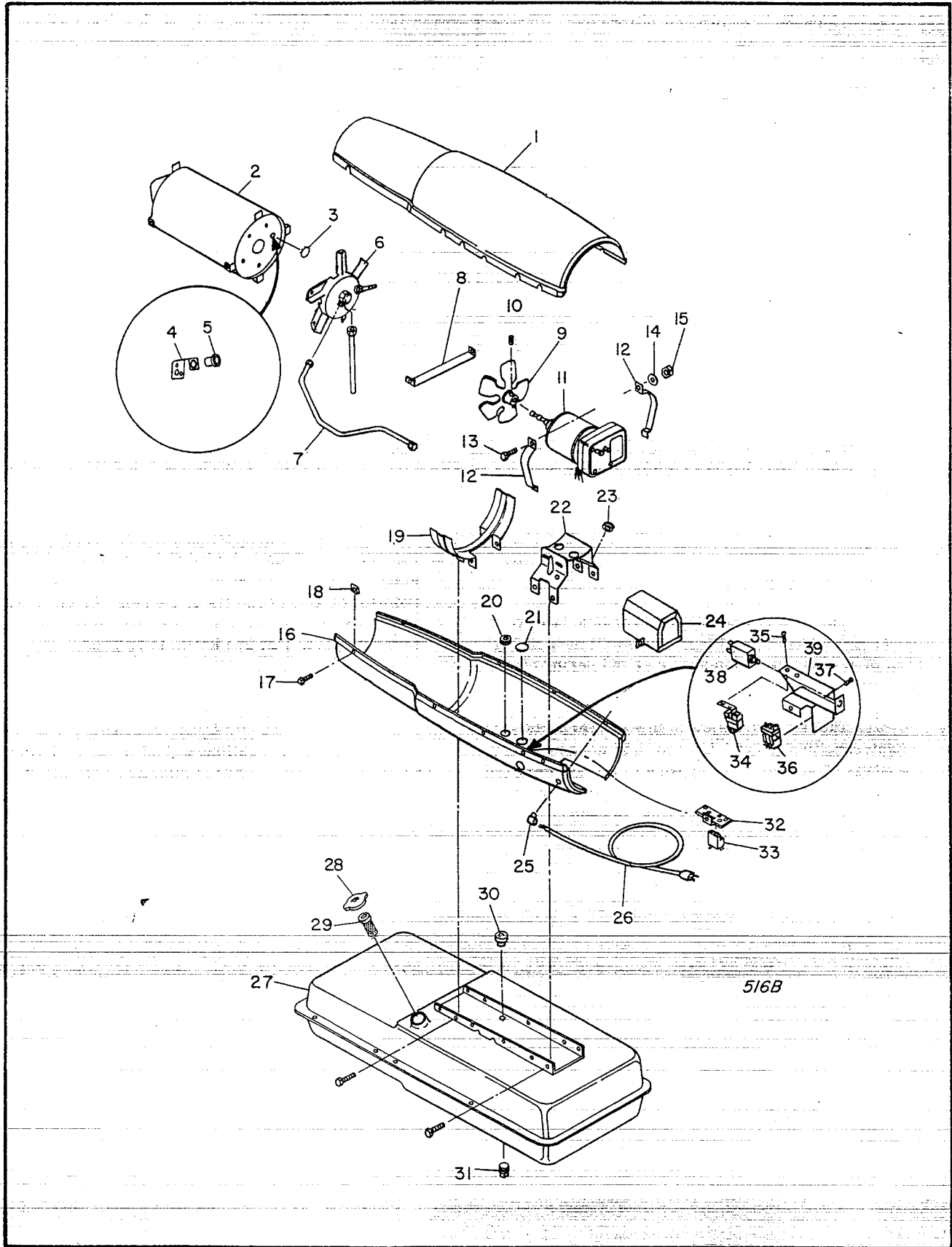


Figure 13. Heater Exploded View

Spec # B99 2965G1 & 3058G1

B99D 2965G2 & 3058G2 2003

SECTION V

PARTS LIST

This list contains all replaceable parts used in the heater covered by this manual, with index numbers for easy reference between the list and the exploded view.

When ordering parts, check the model decal for the correct model number, specification number, and

serial number of the heater. Include the MODEL, SPECIFICATION, and SERIAL numbers when ordering parts. ORDER PARTS BY PART NAME AND PART NUMBER ONLY. DO NOT use the index numbers from the illustration when ordering parts. Include mention of color when ordering painted parts.

Model B-99 and B-99D Heaters General Assembly

Fig. & Index No.	Part No.	Part Name			Fig. & Index No.	Part No.	Part Name		
			B-99	B-99D				B-99	B-99D
13-1	M13134G3A +	Shell, Upper	1	1	13-24	M16697	Transformer, 5000 Volt		
2	M16781G3L	Chamber, Combustion	1	1		M11084-27	Screw (Transformer to Motor Support Bracket)	1	1
	M11084-27*	Screw (Combustion Chamber attaching front)		2					
	M11084-29*	Screw (Combustion Chamber attaching rear)	2	2	25	M11954	Bushing, Strain Relief (Service Cord to Lower Shell)	2	2
3	M15995	Plug, Button (Combustion Chamber rear head)	1	-					
4	M16660	Bracket, Photocell	-	1	26	M10813G33	Cord Assembly, Extension	1	-
	M10908-1*	Screw (Photocell Bracket to Combustion Chamber rear head)	-	2	26	M10813G34	Cord Assembly, Extension	-	1
					27	M18360G2A	Tank Assembly, Fuel	1	1
5	M16656G1	Cell and Bushing Assy	-	1	28	M18051	Cap, Fuel Tank	1	1
6	Ref	Burner Head Assembly (See figure 14)	1	1	29	M18053	Screen, Filler neck	1	1
	M11084-27*	Screw (Burner Head to Combustion chamber)	3	3	30	M10990-3	Bushing, Rubber (Fuel Filter into Fuel Tank)	1	1
7	M16879	Air Line	1	1	31	M21040	Plug, Pipe, Hex Hd. 1/4-18	1	1
8	M15807	Strap, Retainer	1	1	32	M11952	Bracket, Starting Relay Mounting	1	-
	M11084-27*	Screw (Retainer Strap to Lower Shell)	2	2	33	M12462-5	Relay, Starting	1	-
9	M14529	Fan, 16° pitch	1	1		RC2-2C*	Screw (Starting Relay to Mounting Bracket)	2	-
10	SF4-2-1/2K	Setscrew; Soc.Hd, cup pt. 1/4-20 (Fan to Motor Shaft)	2	2		WLI-2	Lockwasher, Internal No. 8	2	-
11	Ref	Motor Package Assembly (See figure 15)	1	1		ST2-2AC	Screw (Grounding)	1	1
12	M16661	Clamp, Motor	4	4		M11084-27	Screw (Relay Bracket to Shell)	1	1
13	HC4-10C*	Screw (Motor Clamps)	2	2		M16852G3	Relay Bracket Assembly	-	1
14	WLM-4*	Lockwasher 1/4 in. (Motor Clamps)	2	2	34	M12462-5	Relay	-	1
15	NPC-4C*	Nut, Hex, 1/4-20 (Motor Clamps)	2	2	35	RC2-2C*	Screw (Relay to Relay Bracket)	-	2
16	M16777A +	Shell, Lower	1	1	36	M14378G2	Relay Assembly	1	1
17	M11084-27*	Screw (Upper Shell to Lower Shell)	6	6	37	M12461-2*	Screw (Relay to Relay Bracket)	-	1
18	M11271-6*	Nut, tinnerman (Upper Shell to Lower Shell)	6	6	38	M14360	Breaker, Circuit	-	1
19	M12330A	Bracket, Shell Support	1	1	39	M16851G1	Bracket Assembly, Control	-	1
	M11084-27*	Screw (Support Bracket to Lower Shell and Fuel Tank)	4	4		M9900G62	Wire Assembly, Black (To Starting Relay)	1	-
	M11084-29*	Screw (Lower Shell to Support Bracket)	2	2		M9900G2	Wire Assembly, Black (To Starting Relay)	-	1
20	1000576	Grommet (Ignition cable thru Lower Shell)	2	3		M9900G80	Wire Assembly (To Breaker)	-	1
21	M15809	Plug, Button (17/32 in. dia. hole)	1	-		M16615G1	Harness Assembly	-	1
22	M16646	Bracket, Motor Support	1	1		M13942-2	Connector (Cell and Bushing and Relay to Circuit Breaker)	-	3
	M11084-27*	Screw (Motor Support Bracket to Lower Shell and Fuel tank)	6	6		M13942-4	Connector (Relay Leads)	2	2
23	1000576	Grommet (Motor Leads thru Motor Support Bracket)	1	1					

* Standard hardware. See Standard Screw List.

+ Specify Color when ordering painted parts.

Fig. & Index		Part	
No.	Number	Part Name	Qty.
14-	M23150-1	Burner Head Assembly	1
1	M16790-2	Filter Tube	1
2	M19630	Filter, Fuel	1
3	M13849	Nut, Flared	1
4	M16741-18	Ring, Retaining	1
	M23151-1	Nozzle Adapter Assy	1
5	M16791	Connector, Male	1
6	M5976	Connector, Male	1
7	M8882	Sleeve, Nozzle Seal	1
8	M10659-1	Washer, Nozzle Seal	2
9	M10809-1	Spring, Nozzle Seal	1
10	M23103	Nozzle, Aspirating 0.66 GPH	1
11	M16535	Adapter, Nozzle	1
12	M16895-1	Spark Plug Assy	1
13	M16534	Body, Burner Head	1

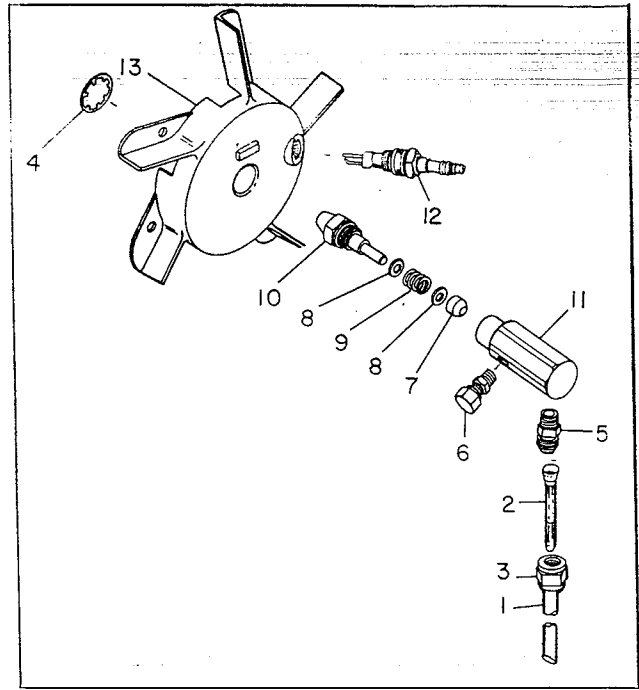


Figure 14. Burner Head Assembly

Fig. & Index		Part		Fl10	Fl10D
No.	Number	Part Name			
15-1	M13830A	Handle, Rear	1	-	
	M13831A	Handle, Front	1	-	
1	M13830-2	Handle, Rear	-	1	
	M13831-2	Handle, Front	-	1	
2	M12345-34*	Screw, Handles and Wheel Support Frame to Fuel Tank	8	8	
3	M12342A	Wheel Support Frame	1	-	
3	M12342-2	Wheel Support Frame	-	1	
4	NTC-3C*	Nut, Hex-10-24 Torque Lock	8	8	
5	M16801	Axle	1	1	
6	M19295	Wheel	2	2	
7	WPC-8C	Washer, Flat	2	2	
8	M16741-15	Ring, Retaining	2	2	

* Standard hardware. Purchase locally.

TOUCH-UP PAINT

Part Number	Description
M13386-4	Paint, Yellow, Aerosol Can
M13386-3	Paint, Green, Aerosol Can
M13386-8	Paint, Black, Aerosol Can

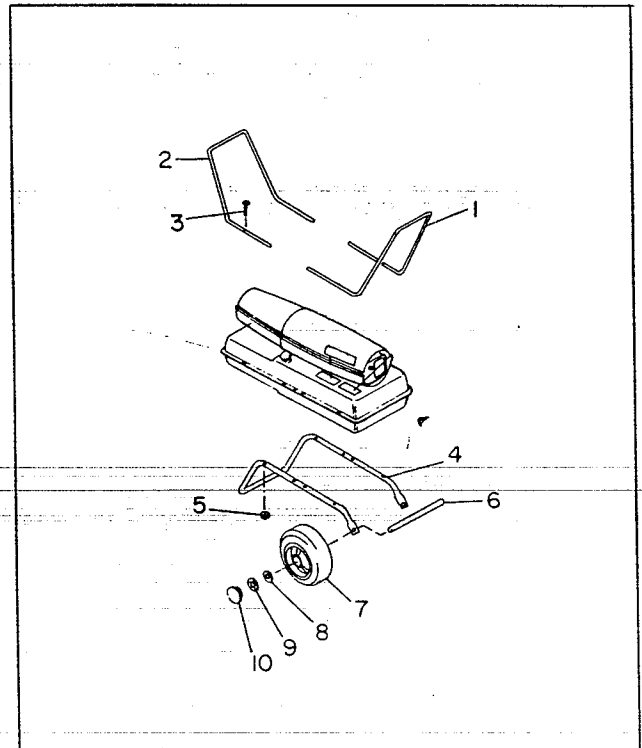


Figure 15. Handle and Wheel Group

No Rear Sheets Available for 1399 ~~363~~ 363
 is the same as F110 - F110D

DECALS

Part Number	Part Name	F110	F110D
M17071	Decal, Tradename	1	1
M12634	Decal, Wiring	1	-
M17218	Decal, Wiring	-	1
M17081	Decal, Atomaster	1	1

Part Number	Part Name	F110	F110D
M18196'	Decal, Mfg. By	1	1
M16749	Decal, Safety Control	-	1
M22743	Decal, Warning	1	1
M22898	Decal, NP	1	1

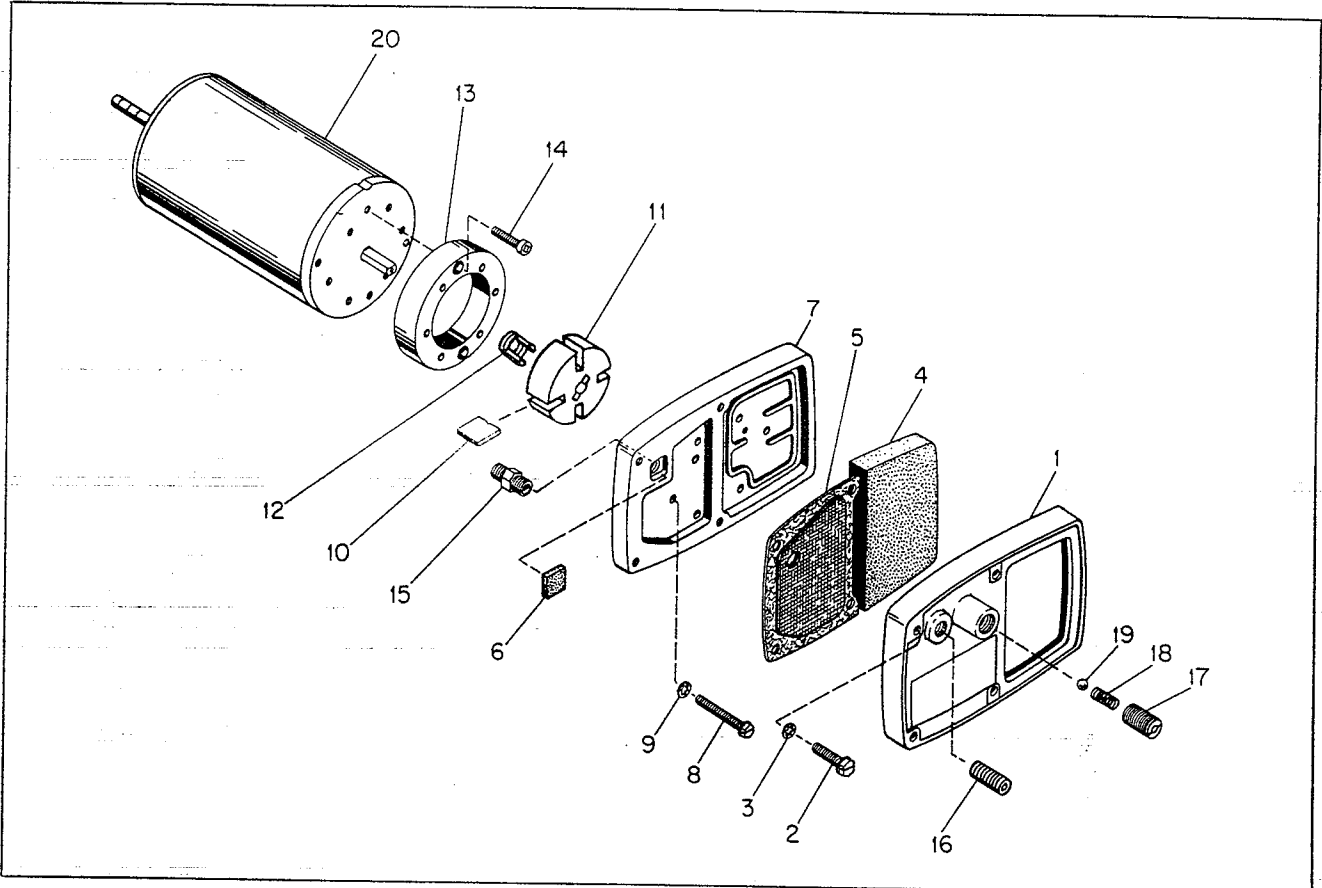


Figure 16. Motor Package Assembly

Fig. & Index No.	Part Number	Part Name	Qty.
16-	M23149-1	Motor Package Assembly	1
1	M16545	End Cover, Filter	1
2	M12461-31*	Screw (Filter End Cover to Pump End cover)	4
3	WLI-3	Lockwasher, Internal No. 10	4
4	M12179	Intake Air Filter	1
5	M12244-1	Output Filter Assy	1
6	M11637	Filter, Lint	1
7	M12233	Front Cover, Pump (Port Plate)	1
8	M12461-32*	Screw (End Cover to Motor)	6
9	WLI-3	Lockwasher, Internal No. 10	6

Fig. & Index No.	Part Number	Part Name	Qty.
10	M8643	Blade	4
11	M22456-1	Rotor	1
12	M22009	Insert	1
13	M8645	Pump Body	1
14	FHPF3-4C	Screw (Pump body to motor)	2
15	M5976	Connector, Male	1
16	M22997	Plug	1
17	M23105	Screw, Pressure Adjustment	1
18	M10993-1	Spring, Compression (Pressure Relief)	1
19	M8940	Ball 1/4 in. dia.	1
20	M23107-1	Motor	1

M31316
 * Standard hardware. Purchase locally.

KS 1370

Fig. & Index No.	Part No.	Part Name	Qty.
16-1	M13831	Handle, Front	1
2	M13830	Handle, Rear	1
3	M12345-34	Screw	4
4	M12342	Wheel Support Frame	1
5	NTC-3C	Nut	4
6	M16801	Axle	1
7	M19295	Wheel	2
8	WP-8C	Washer	2
9	M16741-15	Retaining Ring	2
10	M16802	Hub Cap	2
* Standard hardware. Purchase locally.			

Part Number	Part Name	B-99	B-99D
M17137	Decal, Trade Name	2	2
M17134	Decal, Nameplate and Operating Instructions	1	1
M12634	Decal, Wiring	1	-
M17218	Decal, Wiring	-	1
M17081	Decal, Atomaster	1	-
M17082	Decal, Atomaster	-	1
M18196	Decal, Mfg. By	1	1
M16749	Decal, Safety Control	-	1

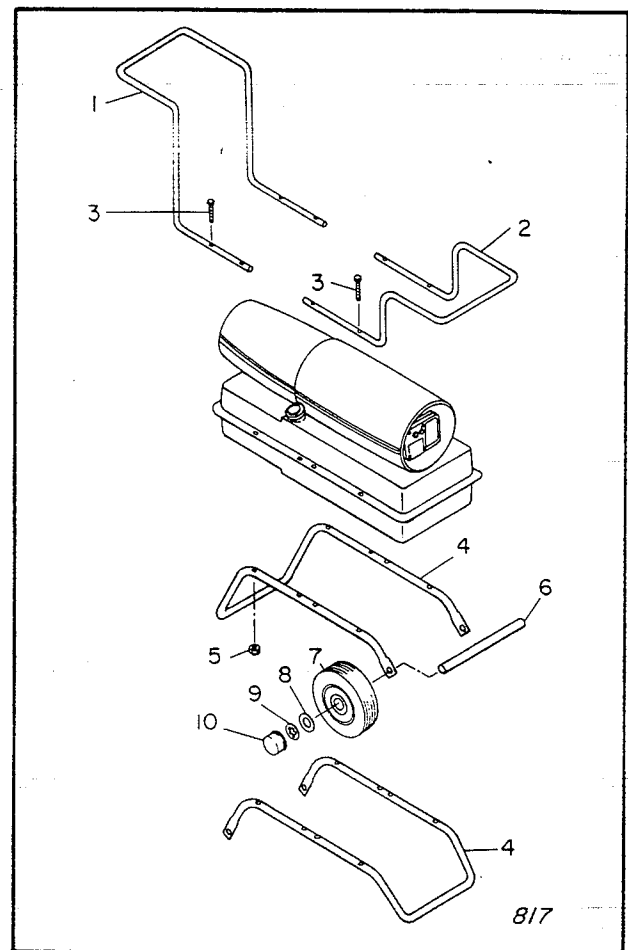


Figure 16. Handles and Wheels

STANDARD SCREWS
(Procure Locally)

Part Number	Part Name
FHPF3-4C	Screw, Fillister hd, No. 10-32 x 1/2 in.
HC4-10C	Screw, Hex hd. machine, 1/4-20 x 1-1/4 in.
RC2-2C	Screw, Rd hd, No. 8-32 x 1/4 in.
ST2-2AC	Screw, Self-tapping, Rd hd, No. 8-15 x 1/4 in.
ST2-8B	Screw, Self-tapping, Rd hd, No. 8-15 x 1 in.
M11084-27	Screw, Self-tapping, hex hd, No. 10-12 x 1/2 in., Type "A"
M11084-29	Screw, Self-tapping, hex hd, No. 10-12 x 3/4 in., Type "A"
M12345-31	Screw, Oval hd machine, No. 10-24 x 1-1/4 in.
M12345-34	Screw, Oval hd machine, No. 10-24 x 2 in.
M12461-31	Screw, Hex hd, No. 10-32 x 1 in.
M12461-32	Screw, Hex hd, No. 10-32 x 1-1/8 in.
M12461-34	Screw, Hex hd, No. 10-32 x 1-1/2 in.
M15823-26	Screw, Self-tapping, hex hd, No. 10-12 x 3/8 in., Type "B"
M12461-2	Screw, Hex hd, No. 6-32 x 3/8 in.
M10908-1	Self-tapping, hex hd, No. 6-32 x 1/4 in.