

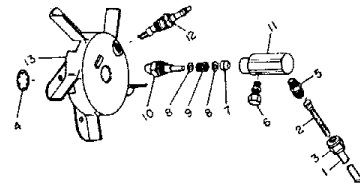
Reddy - M85
Spec# 5058G18

M85D
Spec# 3058G6

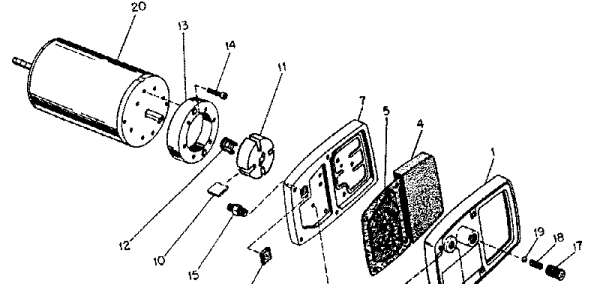
Form # 2644
7-70

No.	No.	Part Name	M85	M85D
13-1	M13134G3D	Shell, Upper	1	1
2	M16781G3	Chamber, Combustion	1	1
	M11084-27*	Screw (Combustion Chamber attaching front)	2	2
	M11084-29*	Screw (Combustion Chamber attaching rear)	2	2
3	M15995	Plug, Button (Combustion Chamber rear head)	1	-
4	M16660	Bracket, Photocell	-	1
	M10908-1*	Screw (Photocell Bracket to Combustion Chamber rear head)	-	2
5	M16656G1	Cell and Bushing Assy	-	1
6	Ref	Burner Head Assembly (See figure 14)	1	1
	M11084-27*	Screw (Burner Head to Combustion chamber)	3	3
7	M16879	Air Line	1	1
8	M15807	Strap, Retainer	1	1
	M11084-27*	Screw (Retainer Strap to Lower Shell)	2	2
9	M14529	Fan, 16" pitch	1	1
10	SF4-2-1/2K	Setscrew, Soc.Hd, cup pt. 1/4-20 (Fan to Motor Shaft)	2	2
11	Ref	Motor Package Assembly (See figure 15)	1	1
12	M16661	Clamp, Motor	4	4
13	RC4-10C*	Screw (Motor Clamps)	2	2
14	WLM-4*	Lockwasher 1/4 in. (Motor Clamps)	2	2
15	NPC-4C*	Nut, Hex, 1/4-20 (Motor Clamps)	2	2
16	M16777D	Shell, Lower	1	1
17	M11084-27*	Screw (Upper Shell to Lower Shell)	6	6
18	M11271-6*	Nut, tinnerman (Upper Shell to Lower Shell)	6	6
19	M12330A	Bracket, Shell Support	1	1
	M11084-27*	Screw (Support Bracket to Lower Shell and Fuel Tank)	4	4
	M11084-29*	Screw (Lower Shell to Support Bracket)	2	2
20	1000576	Grommet (Ignition cable thru Lower Shell)	2	3
21	M15809	Plug, Button (17/32 in. dia. hole)	1	-
22	M16646	Bracket, Motor Support	1	1
	M11084-27*	Screw (Motor Support Bracket to Lower Shell and Fuel tank)	6	6
23	1000576	Grommet (Motor Leads thru Motor Support Bracket)	1	1

No.	No.	Part Name	M85	M85D
13-24	M16697	Transformer, 5000 Volt	1	1
	M11084-27	Screw (Transformer to Motor Support Bracket)	2	2
25	M11954	Bushing, Strain Relief (Service Cord to Lower Shell)	1	1
26	M10813G33	Cord Assembly, Extension	1	-
26	M10813G34	Cord Assembly, Extension	-	1
27	M18360G2C	Tank Assembly, Fuel	1	1
28	M18051	Cap, Fuel Tank	1	1
29	M18053	Screen, Filler neck	1	1
30	M10990-3	Bushing, Rubber (Fuel Filter into Fuel Tank)	1	1
31	M21040	Plug, Pipe, Hex Hd. 1/4-18	1	1
32	M11952	Bracket, Starting Relay Mounting	1	-
33	M12462-5	Relay, Starting	1	-
	RC2-2C*	Screw (Starting Relay to Mounting Bracket)	2	-
	WLI-2	Lockwasher, Internal No. 8	2	-
	ST2-2AC	Screw (Grounding)	1	1
	M1084-27	Screw (Relay Bracket to Shell)	1	1
	M16852G3	Relay Bracket Assembly	-	1
34	M12462-5	Relay	-	1
35	RC2-2C*	Screw (Relay to Relay Bracket)	-	2
36	M14378G2	Relay Assembly	-	1
37	M12461-2*	Screw (Relay to Relay Bracket)	-	1
38	M14360	Breaker, Circuit	-	1
39	M16851G1	Bracket Assembly, Control	-	1
	M9900G62	Wire Assembly, Black (To Starting Relay)	1	-
	M9900G2	Wire Assembly, Black (To Starting Relay)	-	1
	M9900G80	Wire Assembly (To Breaker)	-	1
	M16615G1	Harness Assembly	-	1
	M13942-2	Connector (Cell and Bushing and Relay to Circuit Breaker)	-	3
	M13942-4	Connector (Relay Leads)	2	2



- 1 M16790-2 . Filter Tube 1
- 2 M19630 . Filter, Fuel 1
- 3 M13849 . Nut, Flared 1
- 4 M16741-18 . Ring, Retaining 1
- 5 M23151-1 . Nozzle Adapter Assy 1
- 6 M16791 . Connector, Male 1
- 7 M5976 . Connector, Male 1
- 8 M8882 . Sleeve, Nozzle Seal 1
- 9 M10659-1 . Washer, Nozzle Seal 2
- 10 M10809-1 . Spring, Nozzle Seal 1
- 11 M23103 . Nozzle, Aspirating 0.66 GPH 1
- 12 M16535 . Adapter, Nozzle 1
- 13 M16895-1 . Spark Plug Assy 1
- 14 M16534 . Body, Burner Head 1



- 1 M16545 . End Cover, Filter 1
- 2 M12461-31* . Screw (Filter End Cover to Pump End cover) 4
- 3 WLI-3 . Lockwasher, Internal No. 10 4
- 4 M12179 . Intake Air Filter 1
- 5 M12244-1 . Output Filter Assy 1
- 6 M11637 . Filter, Lint 1
- 7 M12233 . Front Cover, Pump (Port Plate) 1
- 8 M12461-32* . Screw (End Cover to Motor) 6
- 9 WLI-3 . Lockwasher, Internal No. 10 6
- 10 M8643 . Blade 4
- 11 M22456-1 . Rotor 1
- 12 M22009 . Insert 1
- 13 M8645 . Pump Body 1
- 14 FHFP3-4C . Screw (Pump body to motor) 2
- 15 M5976 . Connector, Male 1
- 16 M22997 . Plug 1
- 17 M23105 . Screw, Pressure Adjustment 1
- 18 M10993-1 . Spring, Compression (Pressure Relief) 1
- 19 M8940 . Ball 1/4 in. dia. 1
- 20 M23107-1 . Motor 1

